

11. Important Natural Areas

Mink Hills Wildlife Surveys Winter - Spring 2003

Chandler #1	Chase #2	Badger #3	Brown #4
M deer mouse	deermouse	deer	deer
A eastern coyote	fisher	eastern coyote	eastern coyote
M fisher	grey squirrel	fisher	fisher
M grey squirrel	moose	moose	moose
A meadow vole	red squirrel	red fox	red fox
L moose	porcupine	red squirrel	red squirrel
S porcupine	red fox	red squirrel	red squirrel
L red fox	red squirrel	red squirrel	red squirrel
S red squirrel	snowshoe hare	snowshoe hare	snowshoe hare
S snowshoe hare			
B grouse	chickadee	blue jay	chickadee
I blue jay	crow	chickadee	crow
R chickadee	pileated woodpecker	crow	downy woodpecker
D crow	raven	downy woodpecker	junco
R goldfinch	white-breasted nuthatch	grouse	nuthatch
S white-breasted nuthatch		mourning dove	pileated woodpecker
		pileated woodpecker	white-breasted nuthatch
		turkey	

Natural Areas

Natural Heritage Inventory Site (0.75 mile random buffer)

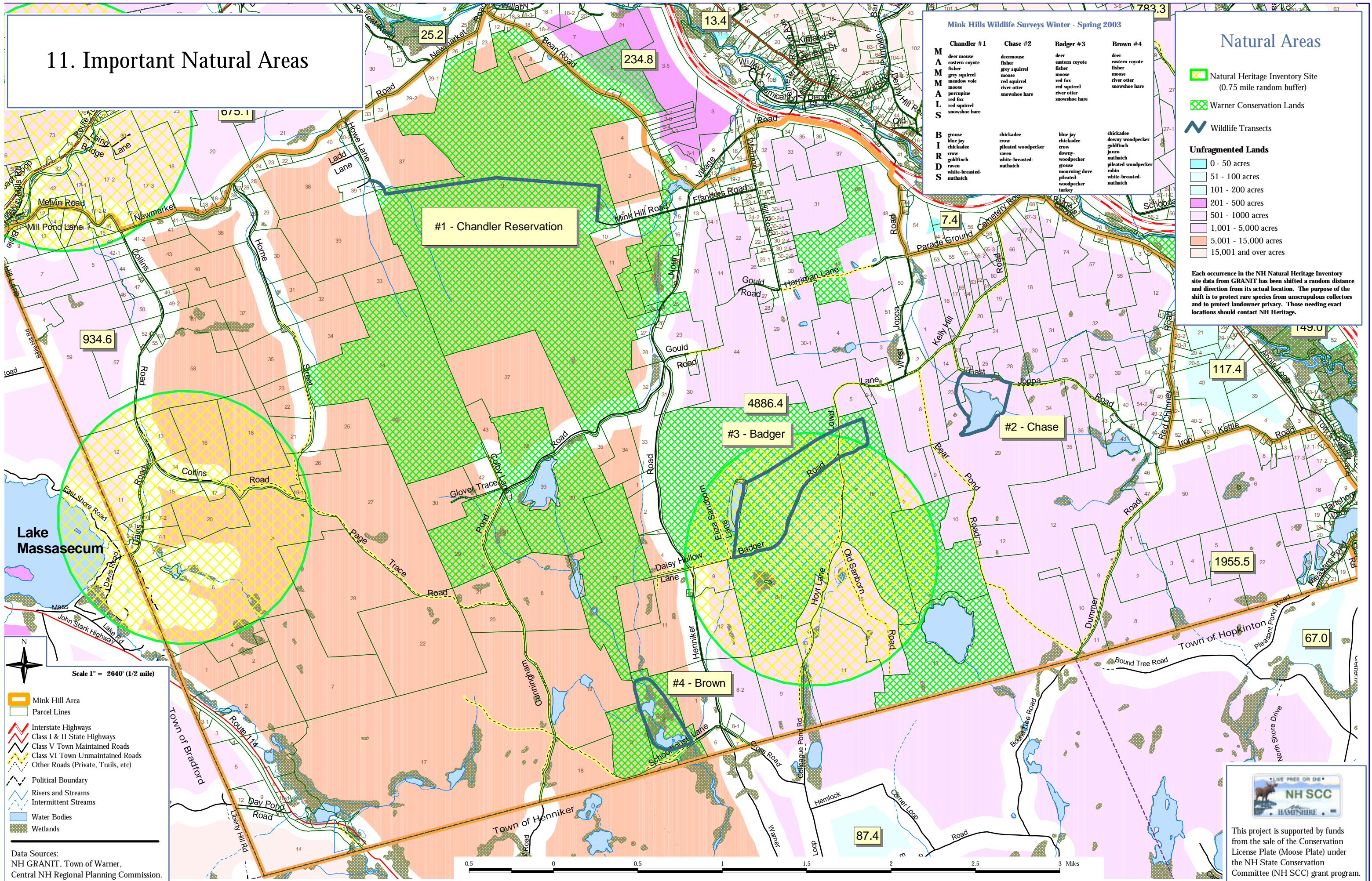
Warner Conservation Lands

Wildlife Transects

Unfragmented Lands

- 0 - 50 acres
- 51 - 100 acres
- 101 - 200 acres
- 201 - 500 acres
- 501 - 1000 acres
- 1,001 - 5,000 acres
- 5,001 - 15,000 acres
- 15,001 and over acres

Each occurrence in the NH Natural Heritage Inventory site data from GRANIT has been shifted a random distance and direction from its actual location. The purpose of the shift is to protect rare species from unscrupulous collectors and to protect landowner privacy. Those needing exact locations should contact NH Heritage.



Scale 1" = 2640' (1/2 mile)

- Mink Hill Area
- Parcel Lines
- Interstate Highways
- Class I & II State Highways
- Class V Town Maintained Roads
- Class VI Town Unmaintained Roads
- Other Roads (Private, Trails, etc)
- Political Boundary
- Rivers and Streams
- Intermittent Streams
- Water Bodies
- Wetlands

Data Sources:
NH GRANIT, Town of Warner,
Central NH Regional Planning Commission.



This project is supported by funds from the sale of the Conservation License Plate (Moose Plate) under the NH State Conservation Committee (NH SCC) grant program.