

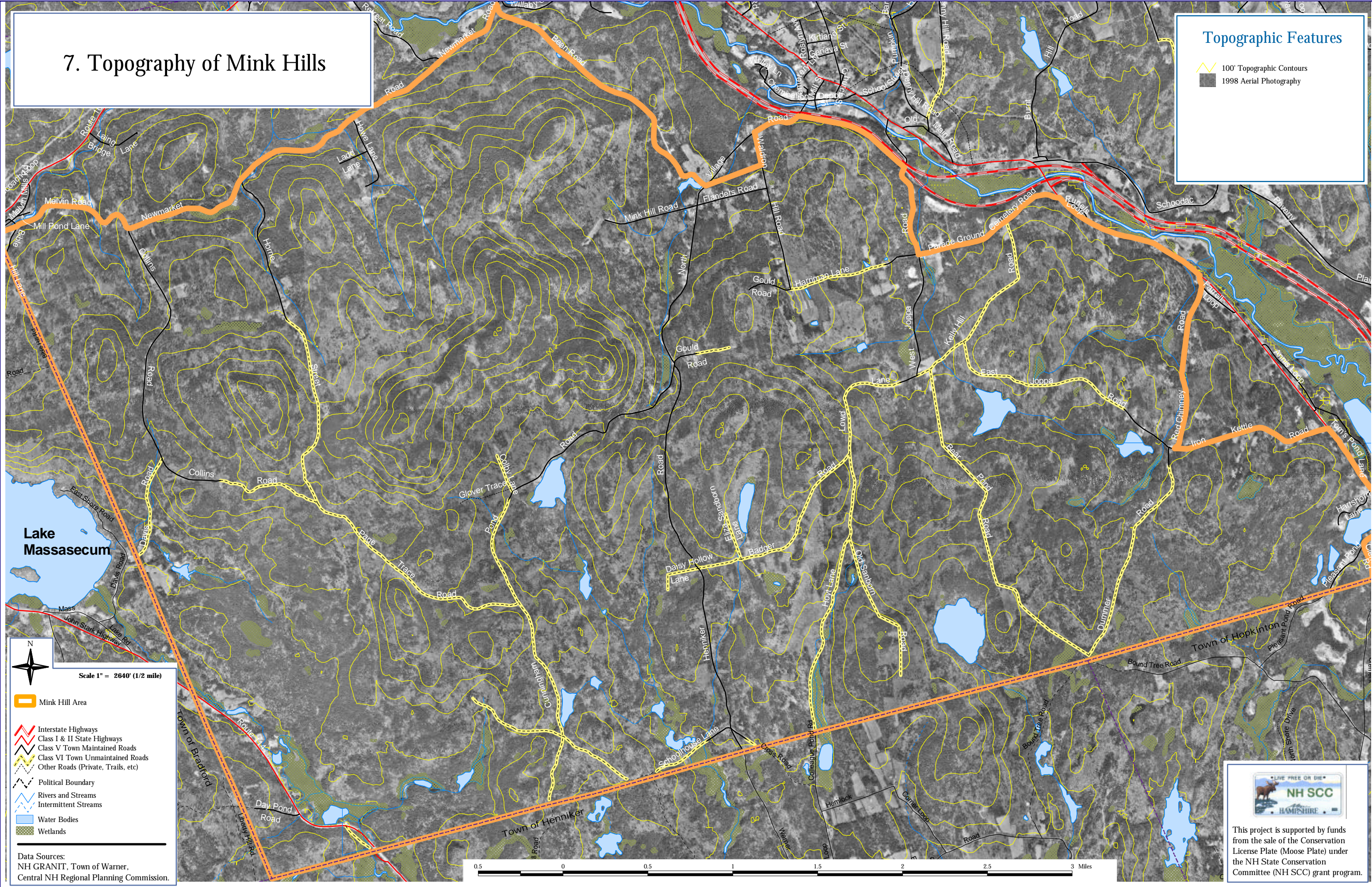


7. Topography of Mink Hills

Topographic Features

-  100' Topographic Contours
-  1998 Aerial Photography



N

Scale 1" = 2640' (1/2 mile)

-  Mink Hill Area
-  Interstate Highways
-  Class I & II State Highways
-  Class V Town Maintained Roads
-  Class VI Town Unmaintained Roads
-  Other Roads (Private, Trails, etc)
-  Political Boundary
-  Rivers and Streams
-  Intermittent Streams
-  Water Bodies
-  Wetlands

Data Sources:
 NH GRANIT, Town of Warner,
 Central NH Regional Planning Commission.



This project is supported by funds from the sale of the Conservation License Plate (Moose Plate) under the NH State Conservation Committee (NH SCC) grant program.